



# ORDER FORM 2024

MODEL				
RS X GRAY	RS X BLACK	RS X RED	RS 450K	RS 360

VERSION	
MAN	LADY

SIZE					
S	M	L	XL	XXL	3XL
short		std		long	

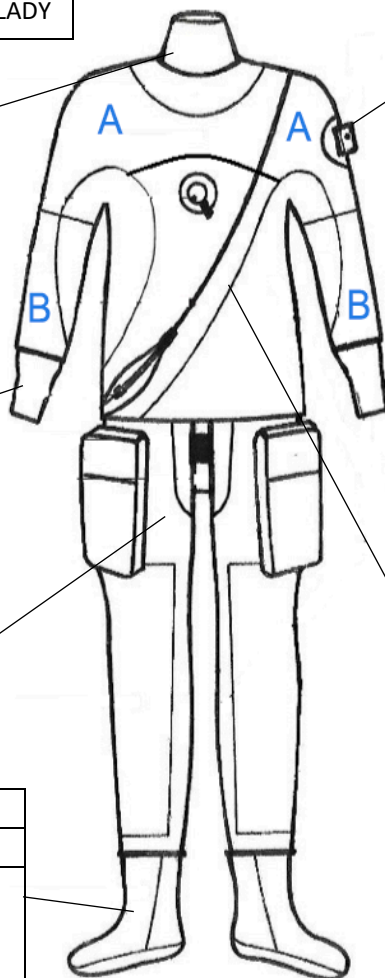
NON STANDARD SUIT	
Jacket size :	Pants size :

NECKSEALS	Latex
	Neoprene (circumference neck _____ cm)
	Interchangeable silicone

WRISTSEAL	
Latex conical	Latex bottleneck HD (circumference wrist _____ cm)
Interchangeable silicone Antares (oval)	Interchangeable silicone Quick Cuff (round)

P-VALVE Light Monkey	Left	Right
	with Quick Disconnecter	
	without Quick Disconnecter	

SHOES								
Boots	XS	S	M	L	XL	XXL	3XL	4XL
Neoprene socks + Rock Boots	XS	S	M	L	XL	XXL	3XL	



VALVES :	Apeks	Si-Tech
----------	-------	---------

VERSION	CAVE - KEVLAR
---------	---------------

RSX GRAY RSX BLACK	TOP	Black	Gray	Red			
RS450 K RS360	CLASSIC	Black	Blue	Red	Gray	Green	Orange
			Blu Royal	Yellow Fluo	Cyclamen	Bordeaux	Silver
	TOP	Black	Blue	Red	Gray	Green	Orange
			Blue Royal	Yellow Fluo	Cyclamen	Bordeaux	Silver
	BI-COLOR	A B	Blue Royal	Red Silver	Cyclamen Silver	Bordeaux Silver	Orange Silver
			Silver Blue Royal	Silver Red	Silver Cyclamen	Silver Bordeaux	Silver Orange

SEAMS COLOR No BI-COLOR	Black	Blue	Red	Yellow	Bronze	Silver	Gray
		Pink	Lilac	Lime	Orange	Olive green	Green

GLIDE NEOPRENE HOOD	Thickness	8mm	7mm	5mm		3mm	
	Man	S	M	L	XL	XXL	3XL
	Lady	S	M	L	XL		
SEAMS COLOR	Black	Blue	Red	Yellow	Bronze	Silver	Gray
		Pink	Lilac	Lime	Orange	Olive green	Green

Options in blue are on payment

Reseller Name:

Notes :

Date :